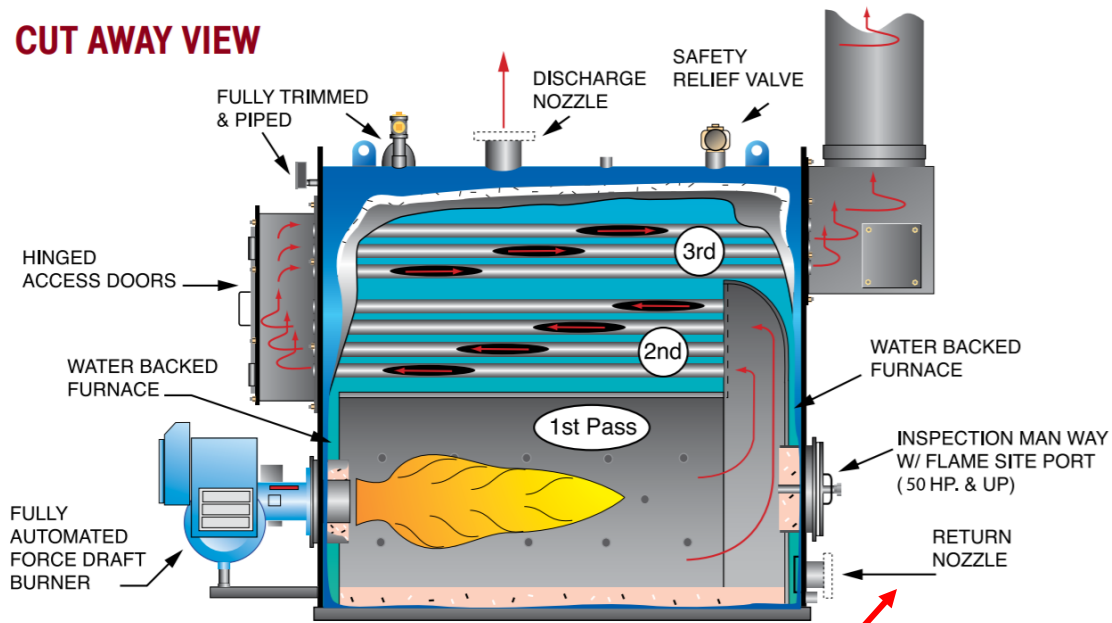


FeOH Hydrous Iron Oxide Traps Oxygen Inside of the Mud Legs, its Corrosiveness will Damage the Boiler at this Point.

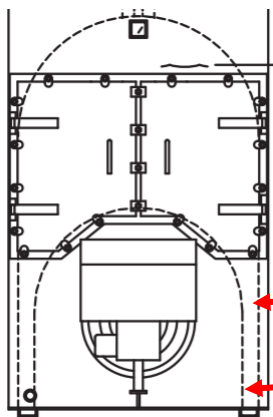
LM1 10/12/20

Firetube High Mass Boilers

CUT AWAY VIEW



Return water laden with FeOH Hydrous Iron Oxide aka "Dirt" enters the high mass boiler, velocity is reduced in the large water storage area and the Dirt drops out into the Water Leg.



Water Legs aka "Mud Legs"

Capped openings to flush out the "Mud"

BACK